

✓ X
S
PICTOU LODGE - PICTOU - NOVA SCOTIA.

JUN 1957
June 6th 1957.

Mr. Cyrus Eaton,
3600, Terminal Tower,
Cleveland,
Ohio.

Dear Mr. Eaton,

we thank you for your telephone reservation for the week of July 5th to July 11th and confirm that we shall be happy to welcome you to Pictou Lodge.

As we are not quite clear just how many rooms you require we are enclosing our brochure which gives details of the cabins which are available here. Perhaps you will be good enough to write us when you have looked it over.

Again thanking you and assuring you that we shall do our utmost to make your stay with us a really happy one.

Yours sincerely,


John Kersley. (owner manager.)

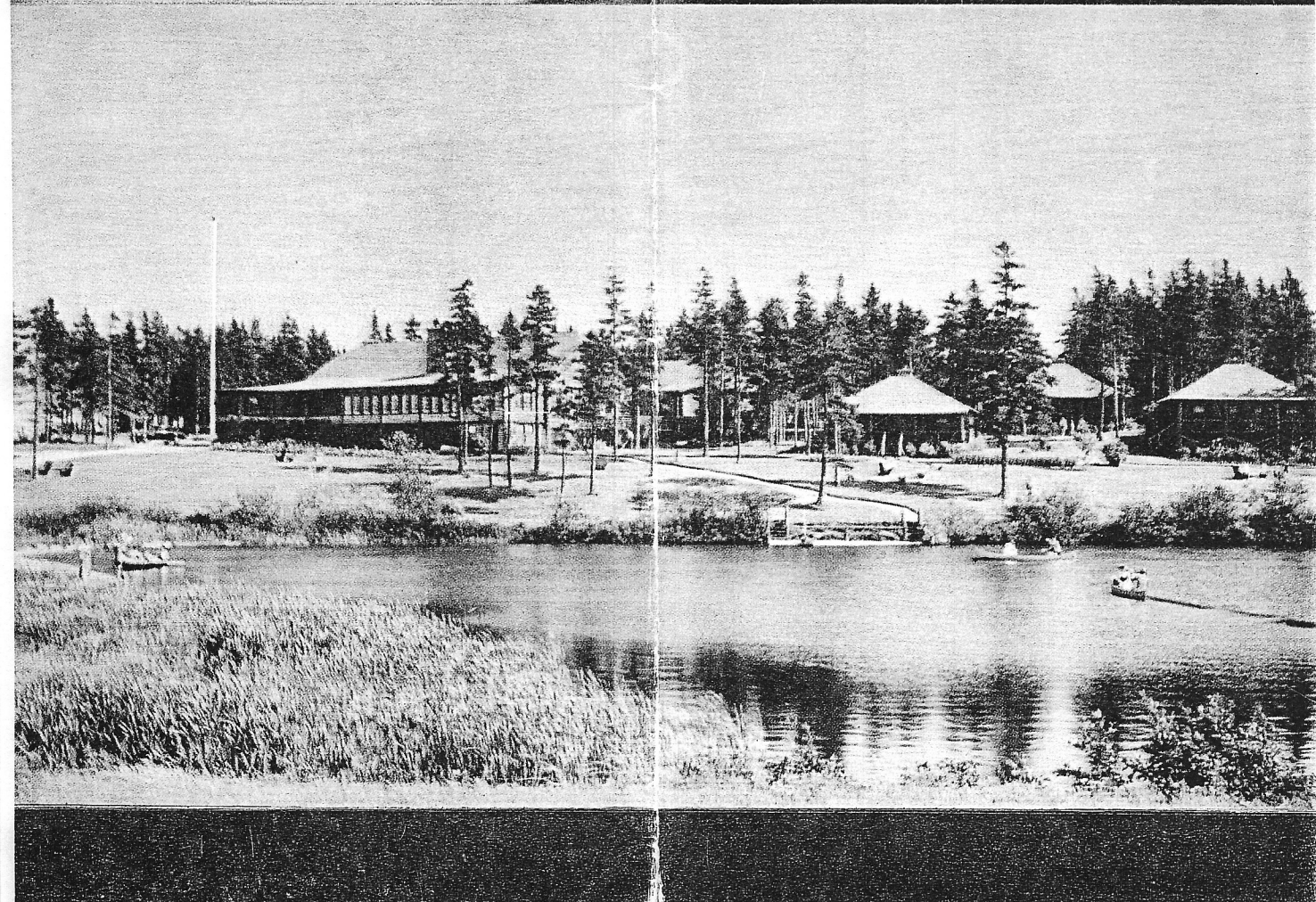
Encl.



PICTOU LODGE

PICTOU, NOVA SCOTIA

*Where Sea and
Forest Meet*



THIS MATERIAL MAY BE PROTECTED BY
COPYRIGHT LAW, TITLE, U.S. CODE
WESTERN RESERVE HISTORICAL SOCIETY
10825 EAST BLVD. CLEVELAND, OHIO 44130

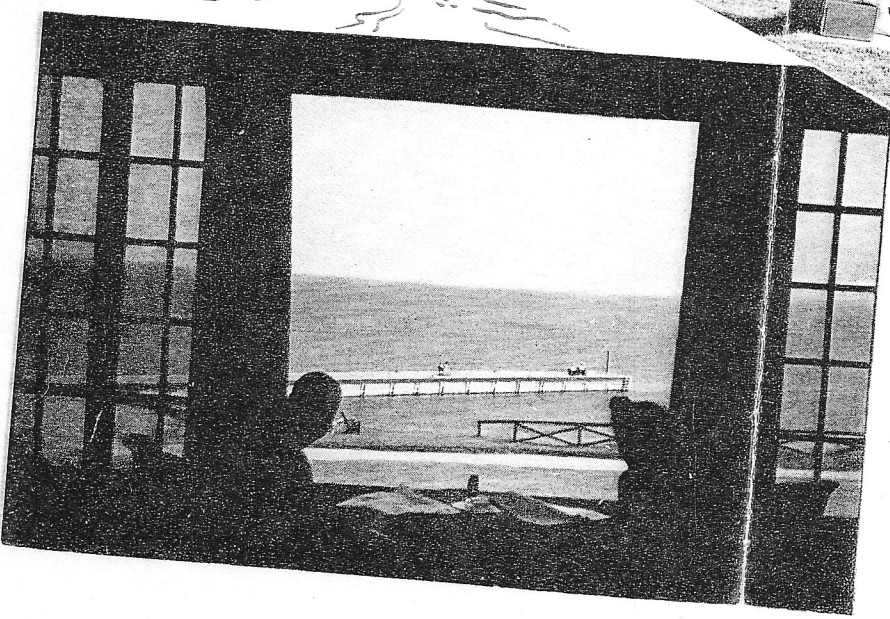
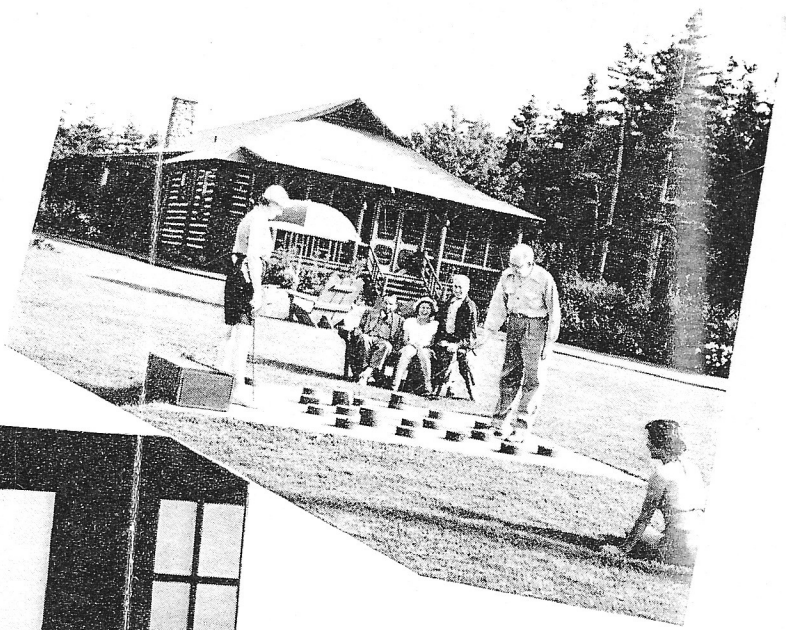
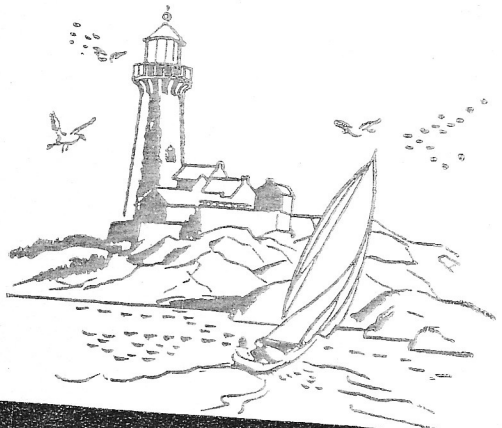


WITHOUT WRITTEN PERMISSION OF THE WESTERN RESERVE HISTORICAL SOCIETY, 10825 EAST BLVD., CLEVELAND, OHIO 44106

LEFT—The bathing beach is but a few steps from the Main Building

CENTRE—The outdoor checkerboard is popular with guests

BOTTOM—Bathing pier as seen from the sun porch



THIS MATERIAL MAY BE PROTECTED BY
 COPYRIGHT LAW, TITLE, U.S. CODE
 WESTERN RESERVE HISTORICAL SOCIETY
 10825 EAST BLVD. CLEVELAND, OHIO 44106

THIS MATERIAL MAY BE PROTECTED BY
COPYRIGHT LAW, TITLE, U.S. CODE
WESTERN RESERVE HISTORICAL SOCIETY
10825 EAST BLVD. CLEVELAND, OHIO 44110

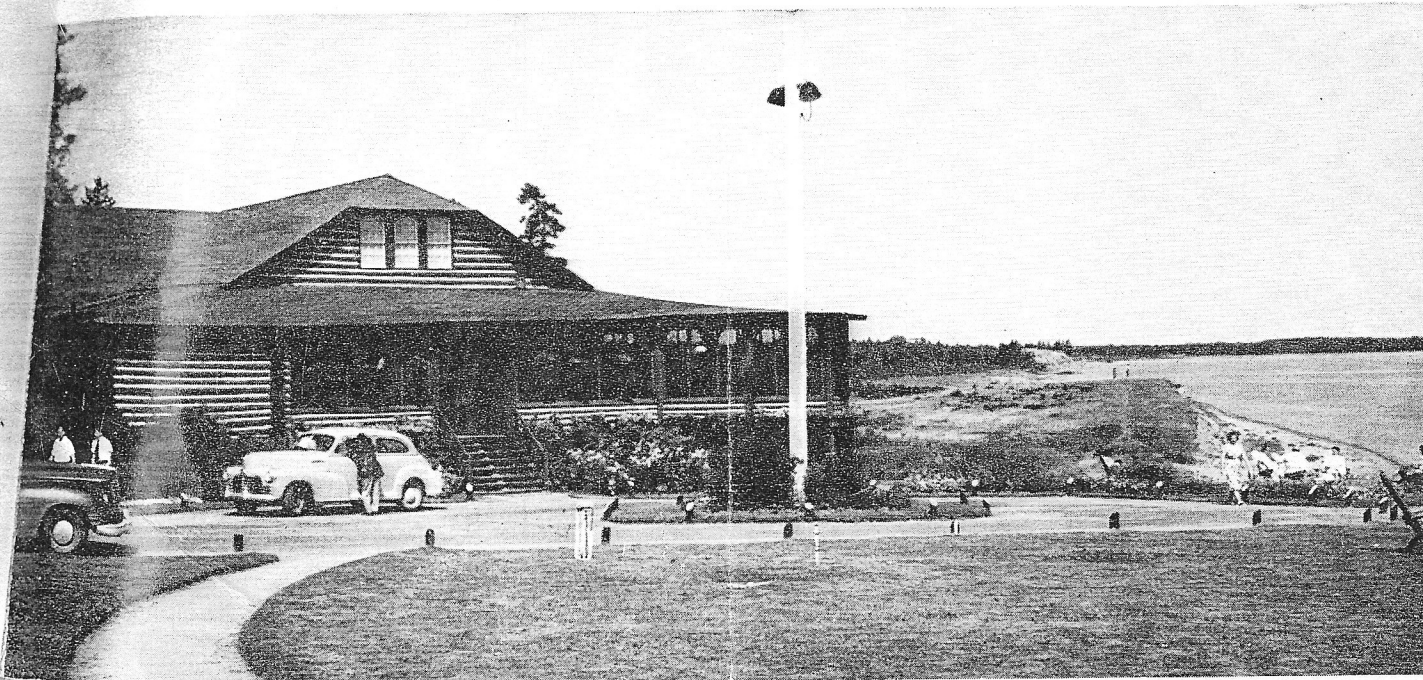
PICTOU LODGE

OPEN
JUNE 22nd to SEPT. 4th
1956

four, six and ten rooms provide sleeping accommodation for one hundred persons. The four-room and ten-room cabins are equipped with open fireplaces which lend a cheery atmosphere and warmth in the cool of the evening. The dining-room and sun porch also have similar large open fireplaces.

The table of Pictou Lodge is noted for delicious fresh sea foods obtained from the surrounding waters. Expert chefs prepare the meals which are served by courteous and well-trained employees in attractive surroundings.

Pictou Lodge stands atop a pine-clad knoll facing the sea.



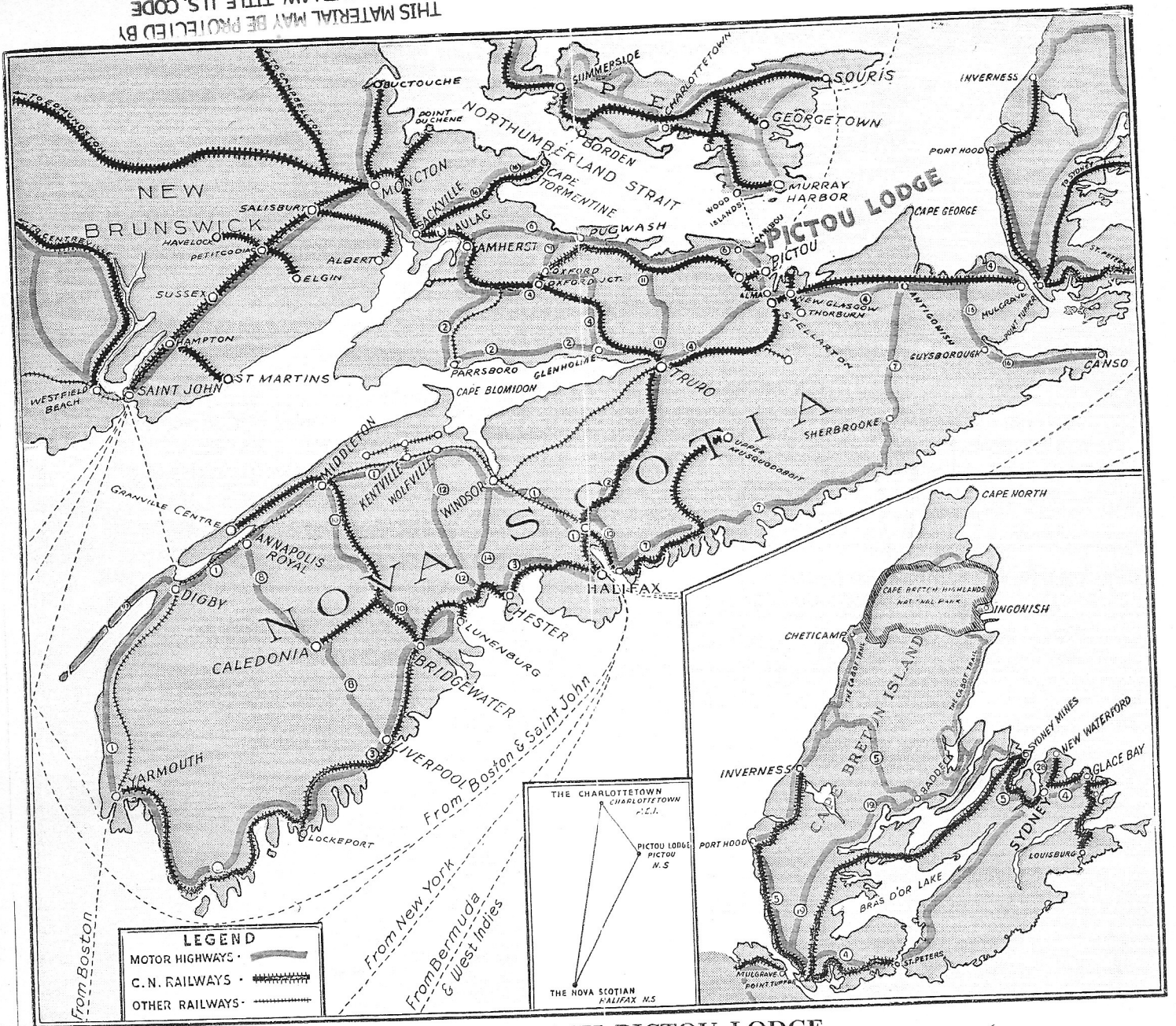
FOR a holiday to be thoroughly enjoyed not only are the surroundings and the opportunities for social and other vacation activities important but the matter of accommodation is equally so. Among the summer holiday centres in Canada's Maritime Provinces none possesses these qualities to a greater extent than Pictou Lodge, near the picturesque Nova Scotia town of Pictou.

Fronting Northumberland Strait, a body of salt water providing excellent bathing, the Lodge occupies a wooded knoll, and the various cabins of

T—The bathing beach
at a few steps from the
Building

ENTRE — The outdoor
piano is popular
with guests

BOTTOM — Bathing
as seen from the
porch



HOW TO REACH PICTOU LODGE

BY MOTOR CAR

From HALIFAX—Paved Highways: No. 2 to Truro, No. 4 to Alma, and No. 6 to the Town of Pictou.
 From AMHERST—Paved Highways: No. 4 to Oxford, No. 21 to Port Philip, and No. 26 to Pictou.
 From YARMOUTH—Paved Highways: Nos. 1 or 3 to Halifax, No. 2 to Truro, No. 4 to Alma, and No. 6 to the Town of Pictou.
 Upon reaching Pictou, look for directional signs to Pictou Lodge.

BY BOAT

Modern and well-equipped ferry boats, with accommodations for automobiles, make six round trips daily between Wood Islands, P.E.I. and Caribou, N.S. (three miles from Pictou Lodge).

CARIBOU TO PICTOU LODGE—THREE MILES

The Lodge is conveniently situated three miles from the Caribou Ferry Terminal on the trunk road leading to the principal highways of

Nova Scotia. Follow our directional signs on the roadside and come to enjoy the hospitality of Pictou Lodge. Our dining-room enjoys the well-earned reputation of excellence.

BY TRAIN

From Montreal and Boston—By "The Ocean Limited" "The Gull" or "The Maritime Express", changing at Truro, Oxford Junction, or Stellarton, N.S.

BY TRAIN AND MOTOR COMBINATION

From Truro an alternative means of reaching Pictou Lodge is by taxi, which, at reasonable cost, covers the 45 miles over well-paved highways to Pictou Lodge. Upon request to the Lodge Manager, passengers on any of these trains will be met at Truro by taxi and given smooth, comfortable motor transfer to the Lodge.