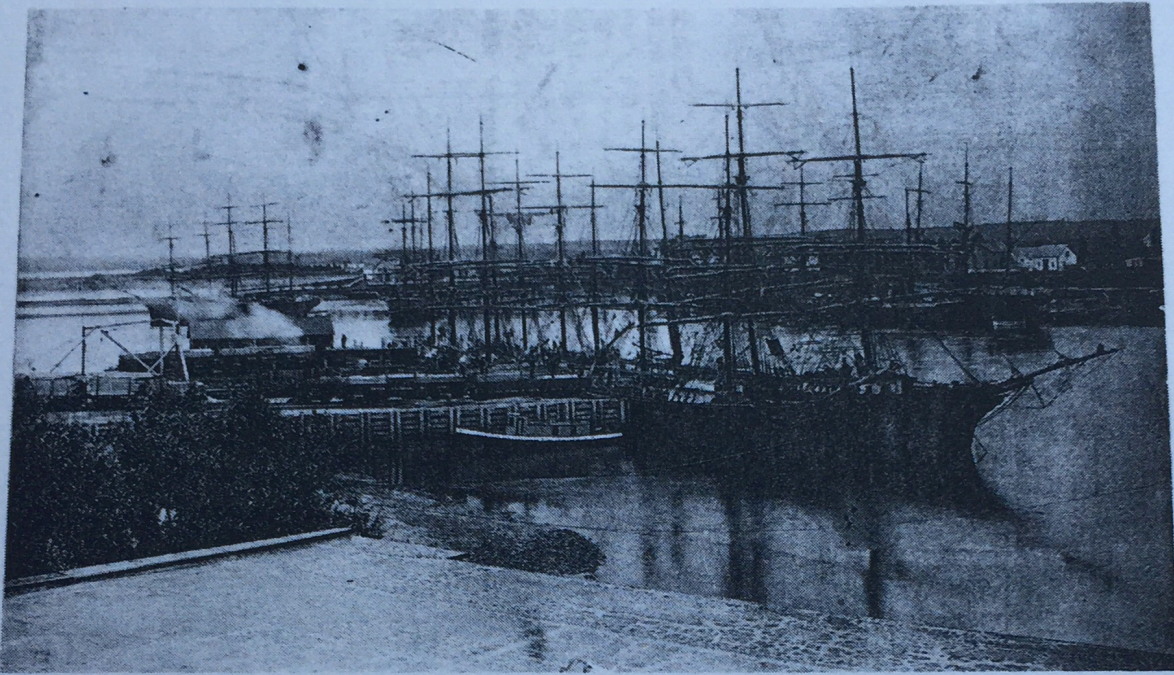


Pugwash Harbour 75 Years Ago



The above is a view of busy Pugwash Harbor 60 years ago in the days of wooden ships and iron men. No less than ten square-rigged vessels were in the harbor when the picture was taken in 1898. The ships are mostly Norwegian barques and two vessels are tied up at the Government wharf loading lumber. A locomotive is on the wharf, the Short Line Railway having opened in 1890.

The first tramp steamer to enter Pugwash harbor was the "Cocuna", which brought the steel from Montreal for the present Palmerstone bridge. The first bridge over the harbor was constructed about 1865, but stood only a few years. Prior to that time a ferry operated. The second bridge was built fourteen years later, but it was blown down, and was replaced by the present bridge.

Shipping, even in the early days, was important to Pugwash, with as many as 28 vessels at anchor in the harbor at one time. Ship-building was the chief industry for many years, with the yards extending from Palmerstone bridge along the waterfront.

The first lobster factory built in Pugwash was owned by a man named Morgan and was situated on what was then Cyrus Bent's wharf.

NAME

SHIPPING IN LUMP.